

St. Gregory Close

Ruislip • Middlesex • HA4 0SR

PCM: £1,400 PCM



coopers
est 1986

JUST REDECORATED THROUGHOUT WITH BRAND NEW CARPETS, Coopers are delighted to offer to the market this perfectly positioned one bedroom ground floor maisonette conveniently situated close to the shopping amenities and transport links of South Ruislip. The accommodation briefly comprises an entrance hallway benefitting a storage cupboard. Doors leading through to a SPACIOUS, light filled reception/dining room which opens into the kitchen with wall and base units, a run of worktops with space for appliances. The accommodation is completed by a spacious bedroom and freshly presented bathroom. To the rear of the property there is a large communal garden and off street parking to the front.

Offered unfurnished and available beginning of November

Ground floor

Quiet, leafy green cul-de-sac

Envious location

Parking

Modern fitted kitchen

Stylish bathroom

Unfurnished

Available beginning of November

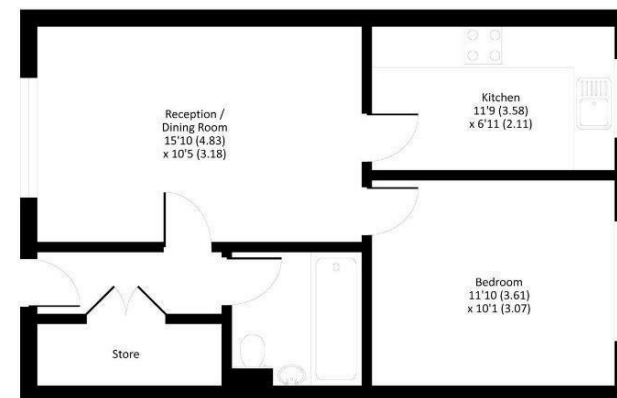
Available Date

7th November 2024

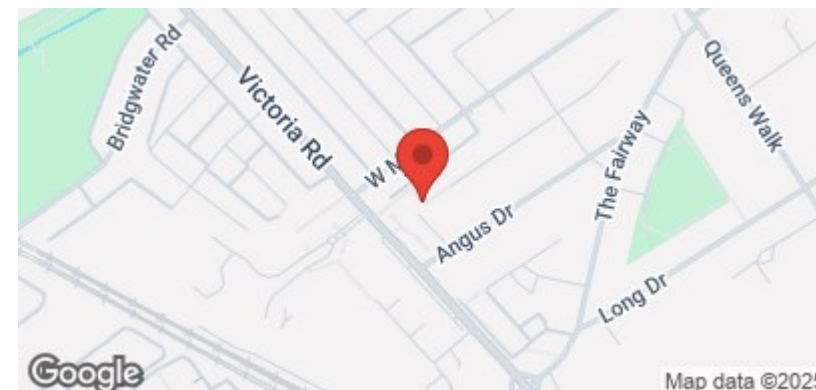


St. Gregory Close, Ruislip, HA4 0SR

Main house gross internal area = 493 sq ft / 45.7 sq m



GROUND FLOOR

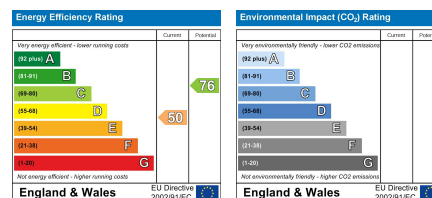


coopers
est 1986

01895 625 625

**126-128 High Street, Ruislip,
Middlesex, HA4 8LL**
rl@coopersresidential.co.uk

CoopersResidential.co.uk



Important Notice: These particulars, whilst believed to be accurate are set out as a general outline only for guidance and do not constitute any part of an offer or contract. Intending purchasers should not rely on them as statements or representation of fact, but must satisfy themselves by inspection or otherwise has the authority to make or give any representation or warranty in respect of the property.